



UNIVERSITY OF LEEDS

School of Medicine Mobile Learning Programme

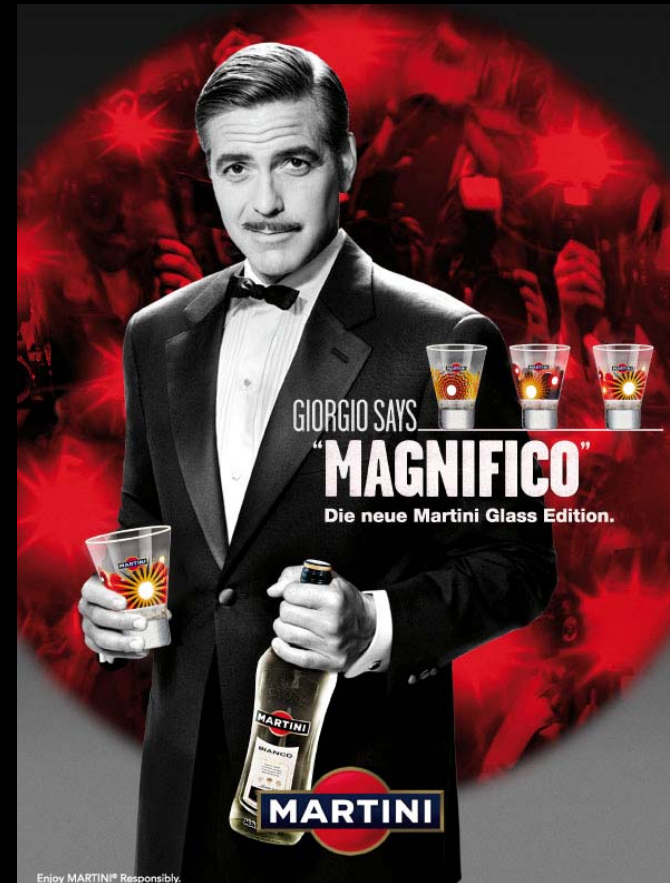
Nancy Davies
September 2011

Why Mobile Learning?

- Helping Students become better doctors
- Support of MBChB Students in practice
- Near patient experience
- Access to medical information
- Assessments undertaken with practice professionals
- Reflection, evidence and assessment outcomes recorded and sent to e-portfolio

Martini Learning

- Anytime
- Anyplace
- Anywhere



Solution

Each Year 4 and Year 5 medical student receives an iPhone 3GS which they can use as their device (260 each year)

O2 3G Network with unlimited data connection



Why Apple?

- Desirability of iPhone - acceptance by Students
- Richness of app store
- Usability of device
- Infection Control



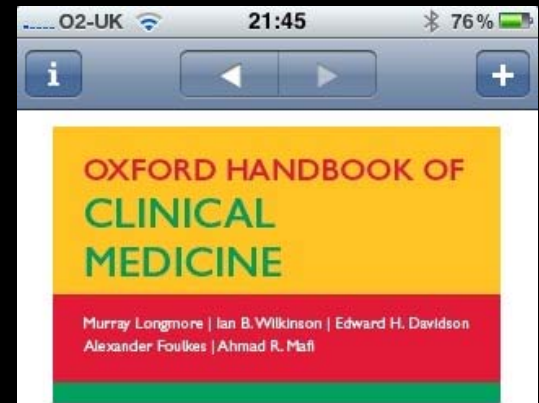
Medical Content

Examples are:

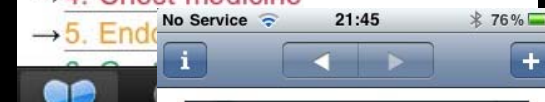
- BNF
- Oxford Handbook titles

Delivered by Medhand
Dr Companion

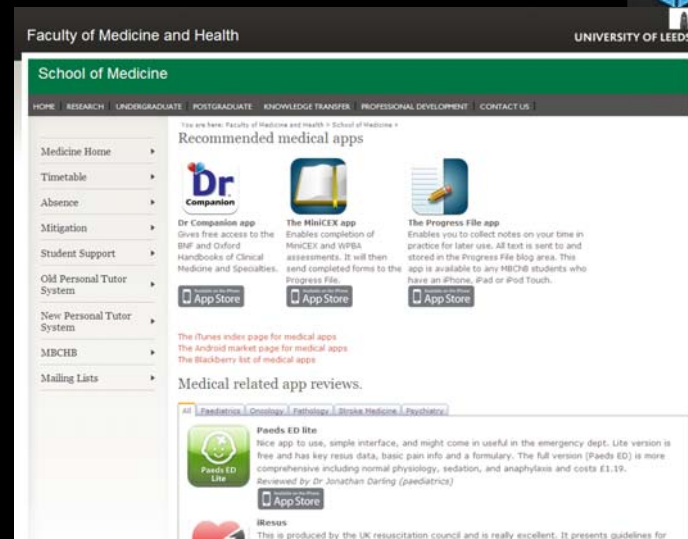
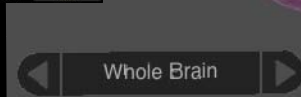
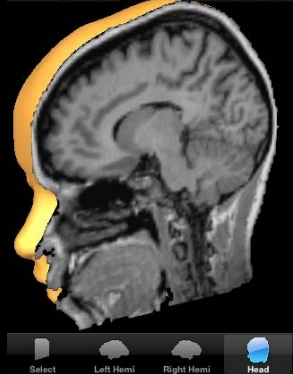
- Other apps, supported by app review site (<http://www.medicine.leeds.ac.uk/mbchb/medicalApps.aspx>)



- Preliminary material
- Front & End papers
- 1. Thinking about medicine
- 2. History and examination
- 3. Cardiovascular medicine
- 4. Chest medicine
- 5. End

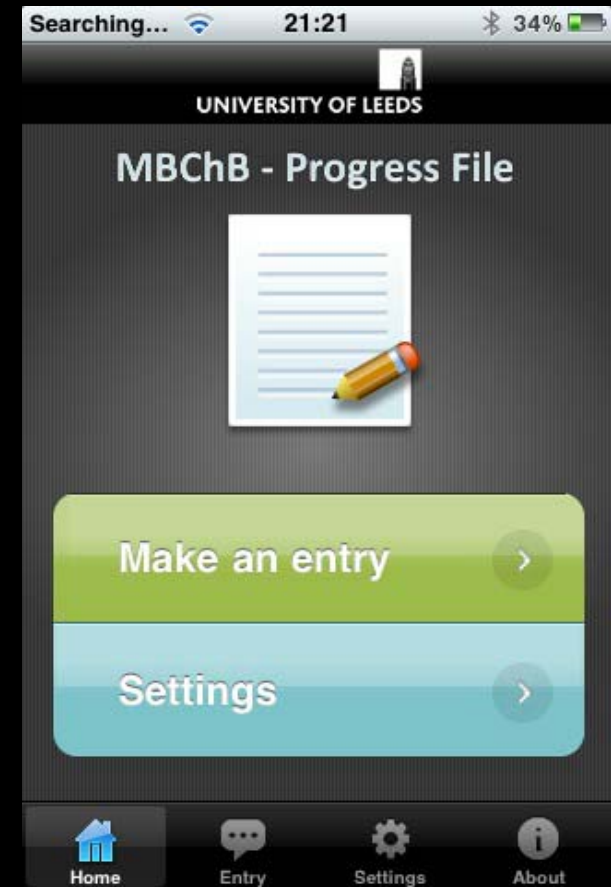


- Preface
- Chapters
- Appendixes
- Index



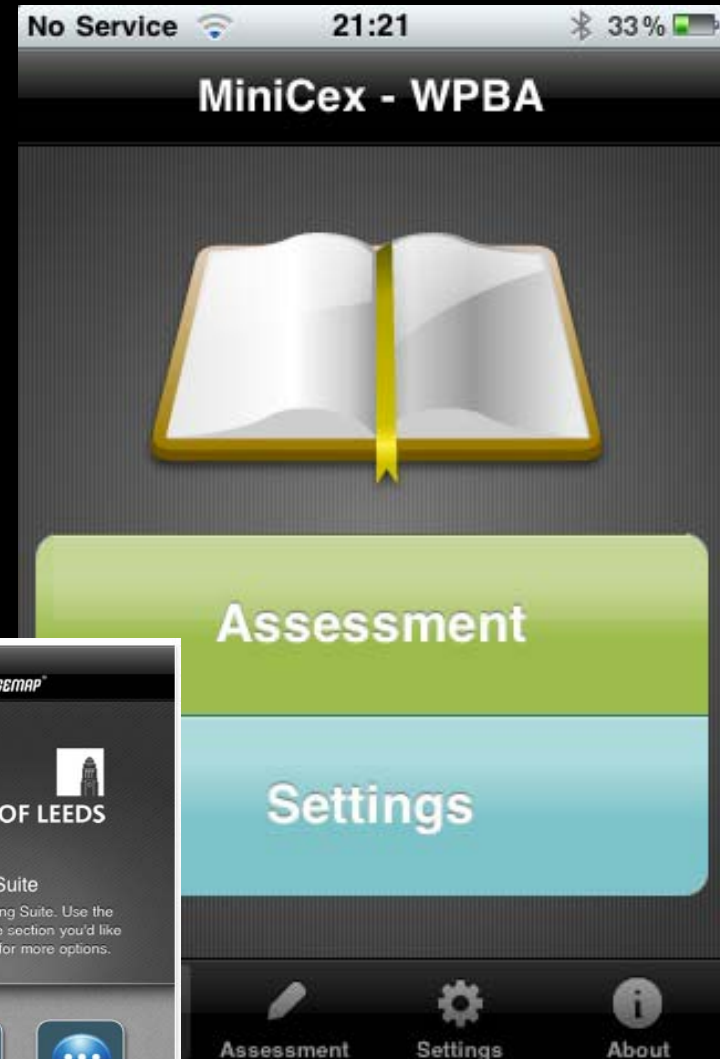
Apps

- Reflection and recording of evidence through progress file
- Publishing to e-portfolio (private and public)
- either Assessment for Learning (formative) or Assessment for Progression (summative)
- Delivered by free app from App Store



Apps

- Based on the ALPS Assessment Cycle
- provide access to assessments which prepare for postgraduate medicine such as MiniCEX (mini clinical examination)
- Quizzes and formative exercises



The e-portfolio (progress file)

- Space for reflecting on progress
- Space for recording evidence
- Space for publishing assessment outcomes
- Preparing for Life Long Learning
- Developing skills for CPD
- Key tool for Mobile learning

The screenshot displays the 'My Progress File' interface for a user named Nancy Davies at the University of Leeds. The page is organized into several sections:

- Header:** Includes navigation links (About, Home, Help, Sign-out) and the University of Leeds logo.
- User Profile:** Shows the user's name (Nancy Davies) and university (Audiology), with a link to 'Edit Profile'.
- Exercises:** A section for viewing responses and feedback, indicating 5 responses made and 0 unread items of feedback.
- Blog:** A section for viewing the user's 'learning journal' or informal blog posts, showing 3 posts and 0 unread comments.
- Contact & Resources:** A section for downloading resources and contacting tutors, including options to send messages and view added resources.
- Recent portfolio entries:** A list of recent entries, including:
 - WPBA [GOSH]:** A response to WPBA [GOSH] set on Monday, September 05, 2010, with 9 items of feedback.
 - WPBA [CCCC]:** A response to WPBA [CCCC] set on Monday, September 06, 2010, with 9 items of feedback.
 - WPBA [CCCC]:** A response to WPBA [CCCC] set on Monday, September 06, 2010, with 9 items of feedback.
- Browse this learning space:** A sidebar menu with options like 'Blog', 'Add Blog Post', 'Exercise Responses', 'Exercises', and 'Progress'.

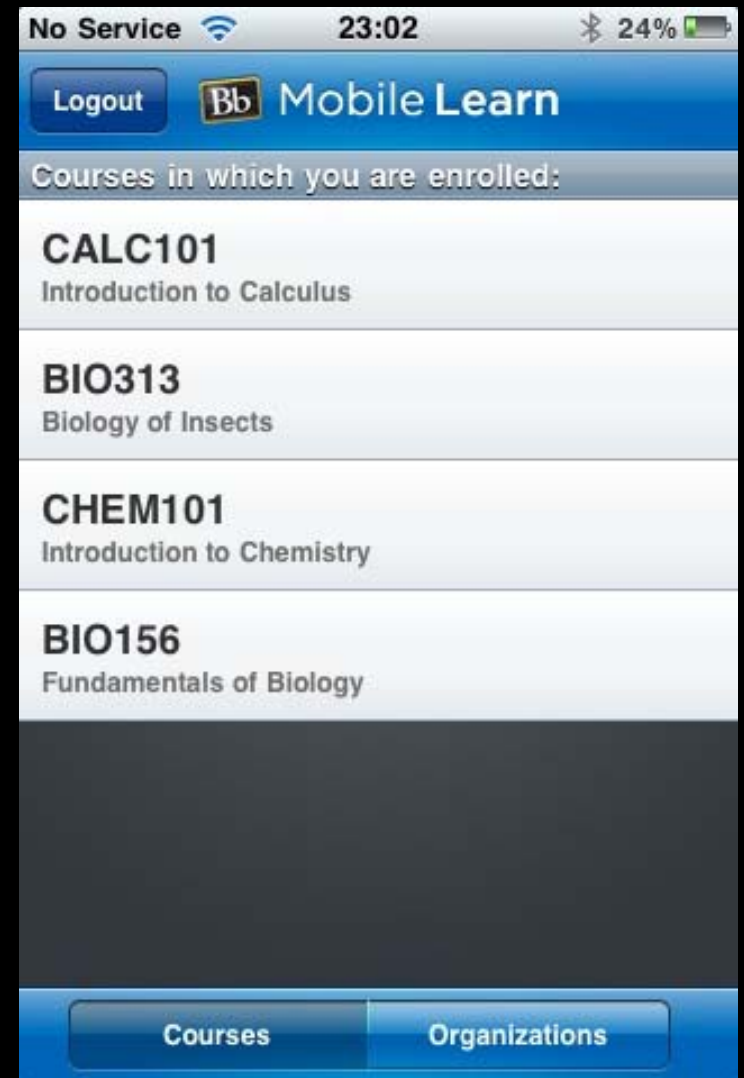
Benefits to Leeds



- The new MBChB is underpinned by innovative technology enhanced learning
- Acceptance of the device - wide impact
- Real innovation in teaching medicine
- Students can get support and assessment in work-based practice
- First steps to expanding mobile learning

What next?

- iTunes U (internal site)
- Mobile Portal
- VLE interface (Blackboard Mobile Learn)



Questions



UNIVERSITY OF LEEDS

telteam@leeds.ac.uk